
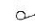
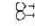
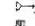
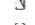
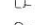
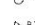

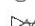



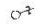
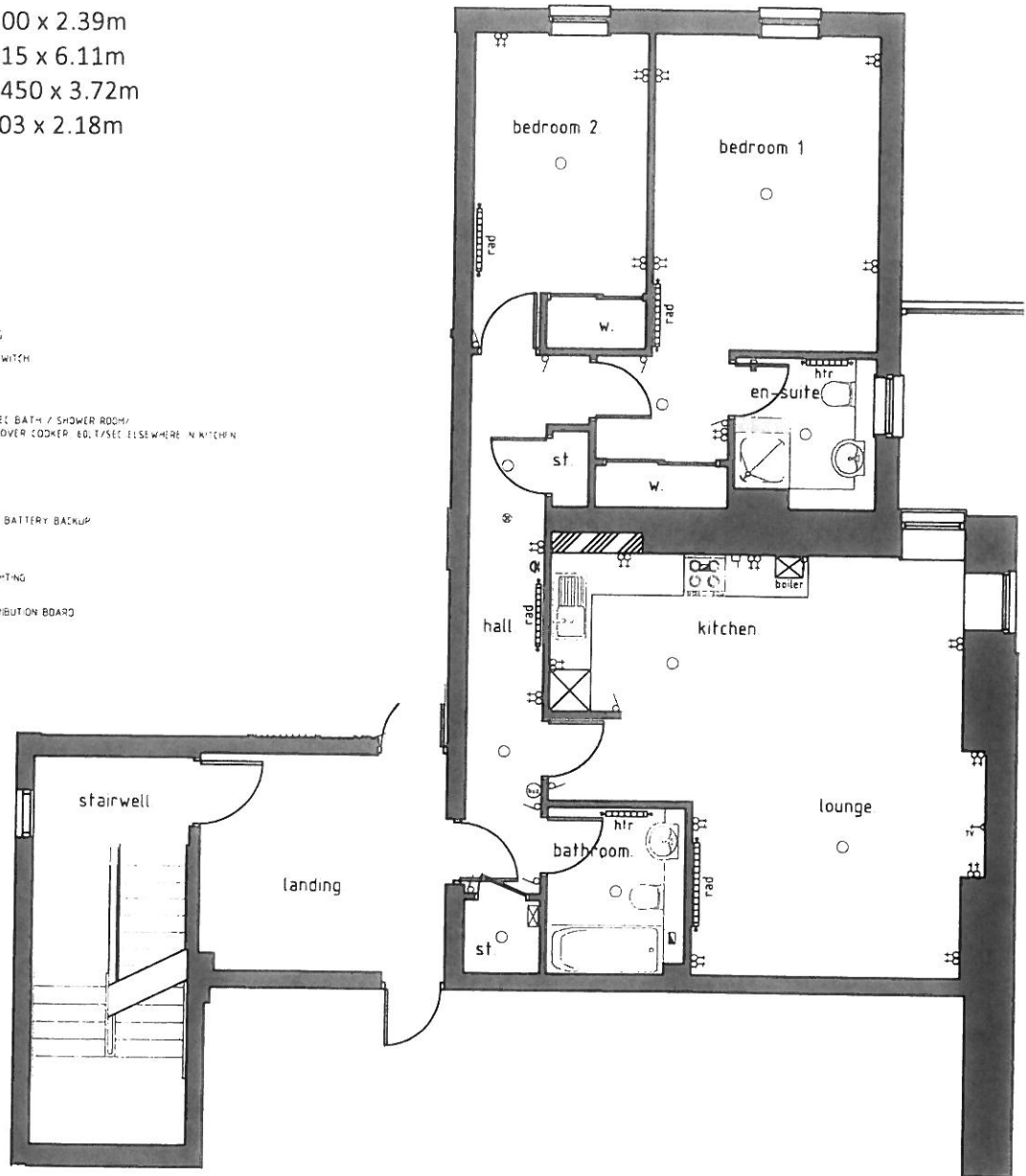


FLAT 2.

- Lounge/Kit 5.99 x 6.050m
- Bathroom 2.00 x 2.39m
- Bedroom 1 3.15 x 6.11m
- Bedroom 2 2.450 x 3.72m
- En-suite 2.03 x 2.18m

ELECTRICAL KEY

-  PENDANT LIGHT FITTING
-  FLUSH FITTING LIGHT SWITCH
-  TWIN 13AMP SOCKET
-  TELEVISION POINT
-  EXTRACT FAN 15L/T / SEC BATH / SHOWER ROOM/  
30L/T/SEC OVER COOKER 60L/T/SEC ELSEWHERE IN KITCHEN
-  COOKER CONTROL
-  FUSED SPUR
-  TELEPHONE POINT
-  SMOKE DETECTOR WITH BATTERY BACKUP
-  DATA POINT
-  FLUORESCENT TUBE LIGHTING
-  ELECTRIC METER / DISTRIBUTION BOARD
-  TWO WAY SWITCHES

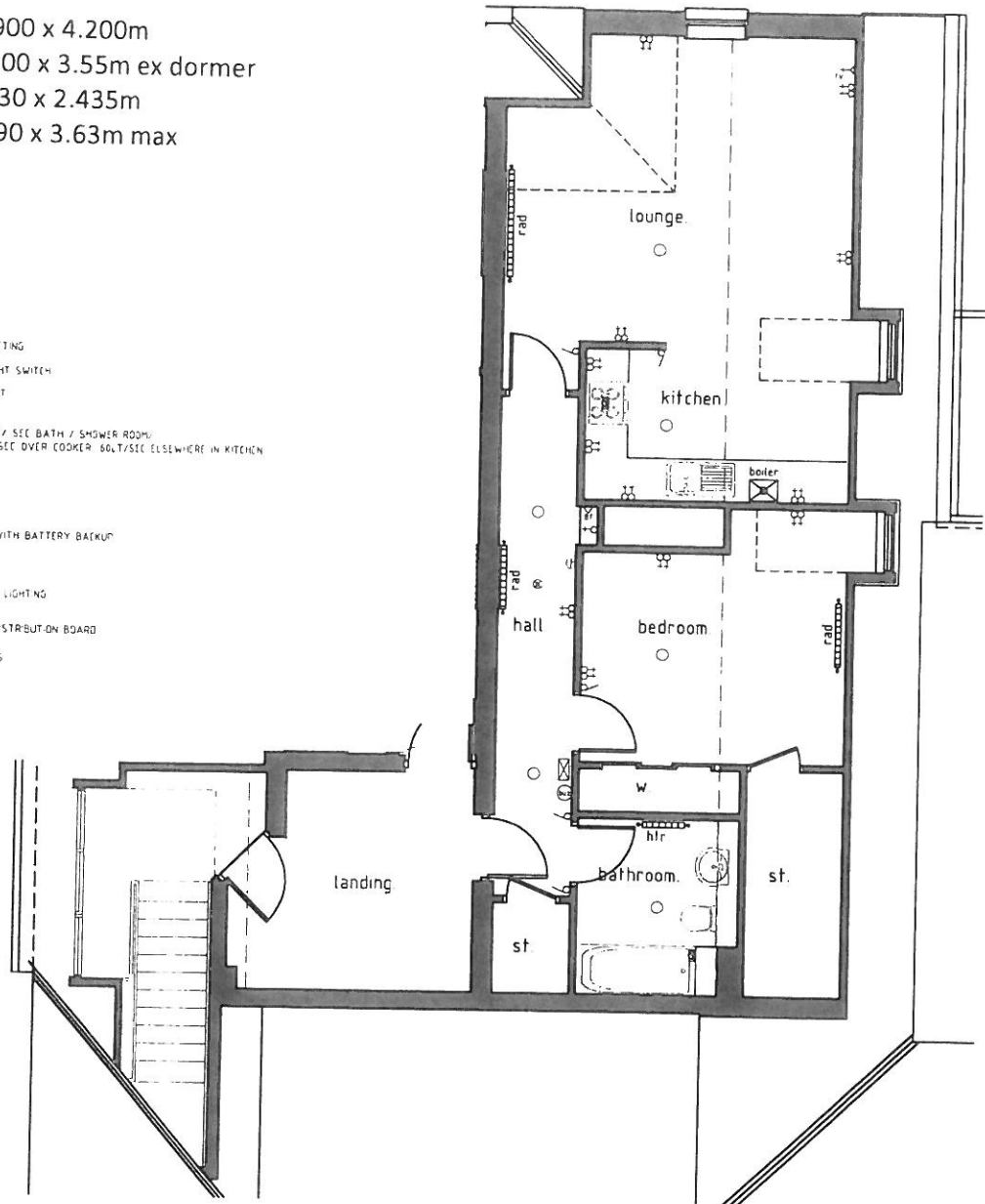


FLAT 4.

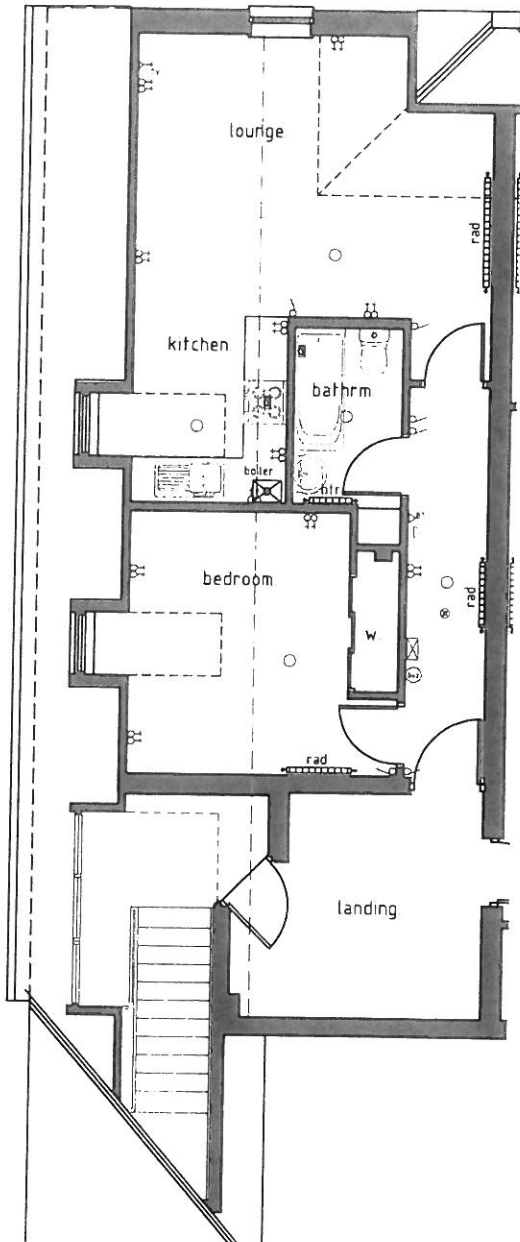
Lounge 4.900 x 4.200m  
 Kitchen 2.100 x 3.55m ex dormer  
 Bathroom 2.230 x 2.435m  
 Bedroom 3.690 x 3.63m max  
 ex dormer

ELECTRICAL KEY

- PENDANT LIGHT FITTING
- ⊞ FLUSH FITTING LIGHT SWITCH
- ⊞ TWIN 13AMP SOCKET
- ⊞ TELEVISION POINT
- ⊞ TV EXTRACT FAN 15L/T/SEC BATH / SHOWER ROOMS  
36L/T/SEC OVER COOKER 60L/T/SEC ELSEWHERE IN KITCHEN
- ⊞ COOKER CONTROL
- FUSED SPUR
- ⊞ TELEPHONE POINT
- ⊞ SMOKE DETECTOR WITH BATTERY BACKUP
- ⊞ DATA POINT
- ⊞ FLUORESCENT TUBE LIGHTING
- ⊞ ELECTRIC METER / DISTRIBUTION BOARD
- ⊞ TWO WAY SWITCHES



FLAT 5.



Lounge 4.900 x 3.860m  
 Kitchen 2.000 x 2.600m  
 Bathroom 1.450 x 2.400m  
 Bedroom 3.020 x 3.590m

ELECTRICAL KEY

- PENDANT LIGHT FITTING
- FLUSH FITTING LIGHT SWITCH
- TWIN 13AMP SOCKET
- TV TELEVISION POINT
- EXTRACT FAN 15LT/ SEC BATH / SHOWER ROOM/  
30LT/SEC OVER COOKER 60LT/SEC ELSEWHERE IN KITCHEN
- COOKER CONTROL
- FUSED SPUR
- BT TELEPHONE POINT
- ⊗ SMOKE DETECTOR WITH BATTERY BACKUP
- DATA POINT
- ⊗ FLUORESCENT TUBE LIGHTING
- ⊗ ELECTRIC METER / DISTRIBUTION BOARD
- TWO WAY SWITCHES